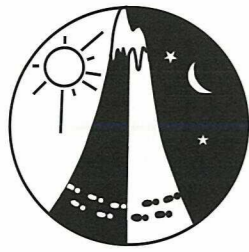


FLYBY NIGHT

WARA Upside Down Rogaine 11 & 12 February 2006



LEGEND

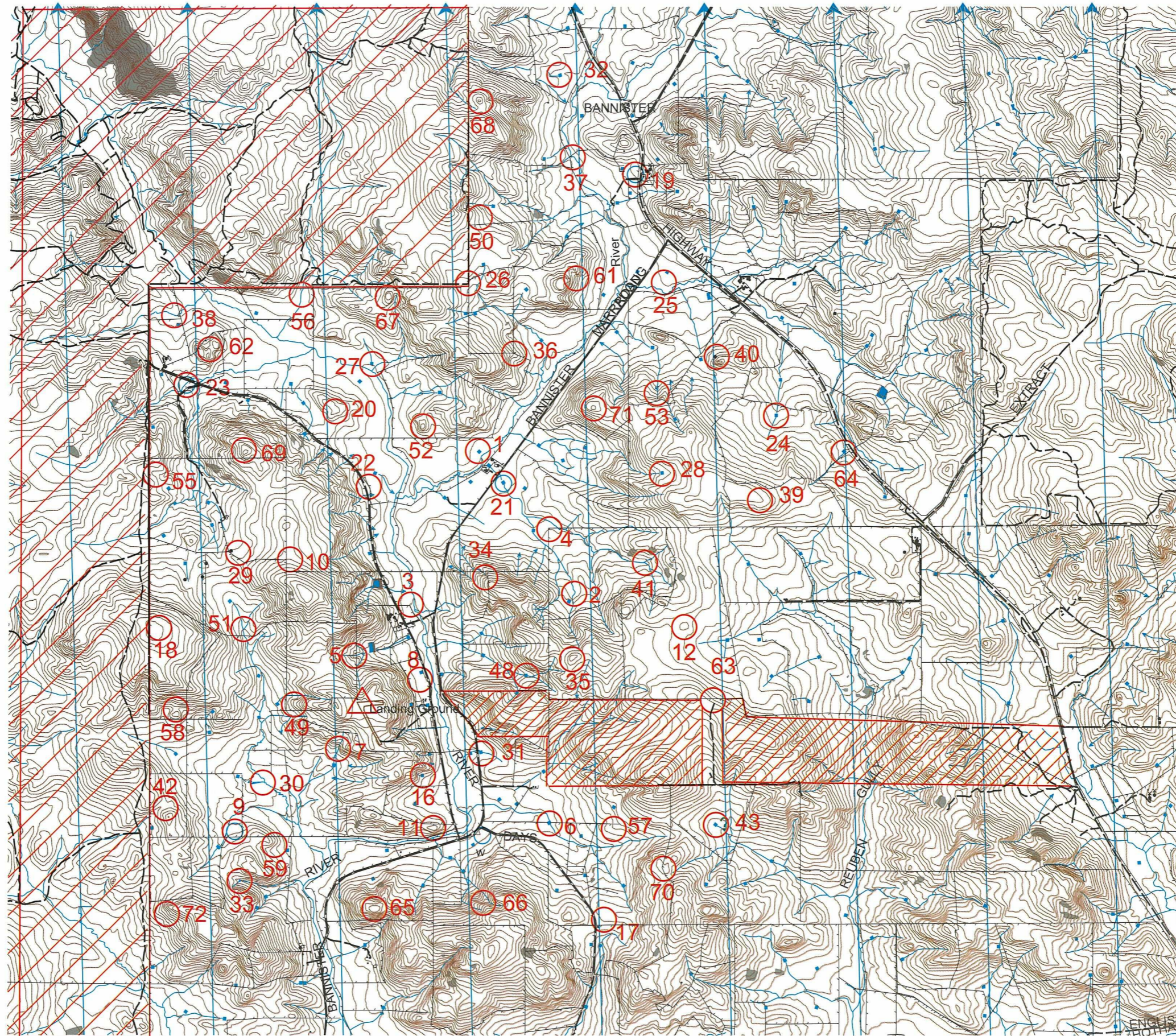
Building	■
Continuations	→ →
Control	○ 72
Contours	~ ~ ~
Dam	■ ■
Fence	— — —
Hash House	△
Magnetic North Line	→
Out of Bounds	▨
Road, Sealed	— — —
Road, Major Gravel	— — —
Track	- - - -
Watercourse	~ ~ ~
Water Drop	○ W

SCALE 1:50,000, 5 metre contour interval



SETTERS AND VETTERS

GORDON BIRCH
LINDA LIEBENAU
JOHN REYBURN



Thanks to Landowners
RICHARD, JAN, SIMON &
NATALIE KELSALL
RON & HELEN WESSELS
RICHARD HARDY

Thanks also to the owners of the
out of bounds area for allowing
us passage across their property



The FlyBy Night Upside Down Rogaine. 11 and 12 February 2006

No.	Description	Points	No.	Description	Points	
1	THE WINDMILL	20	37	THE CREEK CROSSING	60	Important Information
2	A BEND IN THE CREEK	20	38	THE DAM 50 METRES @ 360 DEGREES	60	
3	A POND	20	39	THE SPUR	60	Control Cards From 1930 Saturday
4	A FENCE CORNER ON A CREEK	20	40	A CONCRETE WATER TANK	60	
5	A CREEK JUNCTION	20	41	THE CREEK JUNCTION	60	Briefing 1945 Saturday
6	THE DAM WESTERN END	20	42	A LARGE 15 METRE LOG	60	
7	THE FOOT OF THE WATER FALL	30	43	THE DAM	70	Start 2000 Saturday
8	A POWER POLE	30	44			
9	WATER DROP	30	45			Finish 0800 Sunday
10	A FENCE JUNCTION	30	46			
11	THE KNOLL	30	47			Hash House Opens at 0600 Sunday Closes 0930 Sunday
12	SMALL KNOLL	30	48	EASTERN END DAM/CREEK	70	
13						Sunset 1911 Saturday
14			49	THE SPUR	70	
15			50	THE SMALL SPUR	70	Silvery Moonrise 1822 Saturday
16	THE DAM	30	51	A CREEK JUNCTION	70	
17	SMALL GROVE OF TREES	30	52	THE KNOLL	70	Sunrise 0551 Sunday
18	A ROCK/WOOD MOUND ON A BROAD KNOLL	30	53	A BEND IN THE CREEK ABOVE A WASHED OUT DAM	70	
19	A WATER DROP UNDER A FIG TREE	40	54			Silvery Moonset 0339 Sunday
20	THE SPUR E.S.E END	40	55	HEAD OF A GULLY/CREEK	80	
21	THE DAM/WATER DROP 10 METRES EAST	40	56	THE CREEK	80	Late Penalty 10 points per minute or part minute. LATE (no points) later than 0830 Sunday
22	A BEND IN THE ROAD	40	57	TWO METRE HIGH ROCK	80	
23	THE ROAD JUNCTION/WATER DROP 65 METRES @ 275 DEGREES	40	58	THE SADDLE	80	Controls Used 63
24	THE DAM 30 METRES @ 140 DEGREES	40	59	THE SPUR	80	
25	A LONE TREE IN THE PADDOCK 100 METRES FROM DAM	50	60			Total Points 3680
26	A FENCE CORNER	50	61	THE GULLY	90	
27	THE SOUTH EAST CORNER OF THE DAM	50	62	THE SADDLE	90	Patrolled Roads: Chalk Brook Rd, Bannister Rd, Bannister Marradong Rd
28	THE DAM	50	63	TRACK FENCE JUNCTION	90	
29	A SMALL SPUR NORTHWEST END	50	64	THE DAM	90	Please use track only between controls 43 and 63
30	A CREEK JUNCTION	50	65	THE SUMMIT	90	
31	THE EASTERN DAM	60	66	A ROCK SURFACE 20X30 METRES	90	
32	THE DAM	60	67	THE KNOLL	100	
33	THE DAM	60	68	THE KNOLL	100	
34	HEAD OF A GULLY	60	69	"NOT ANOTHER BLOODY KNOLL"	100	
35	ROCKY KNOLL	60	70	SOUTHWEST EDGE OF CLEARING ON THE KNOLL	100	
36	A FENCE CORNER	60	71	THE SUMMIT	100	
			72	A 3 METRE BOULDER	100	

Water Drops: At Controls 9, 21, 19, 23, CNR Day / Bannister Road
If you are injured please make your way to a water drop or a patrolled road and wait there for help.

Patrolled Roads: Chalk Brook Rd, Bannister Rd, Bannister Marradong Rd

Please use track only between controls 43 and 63